



*where quality meets life*

**PFLUGERVILLE**  
**T E X A S**

# **Water and Wastewater Impact Fees**

December 5, 2022

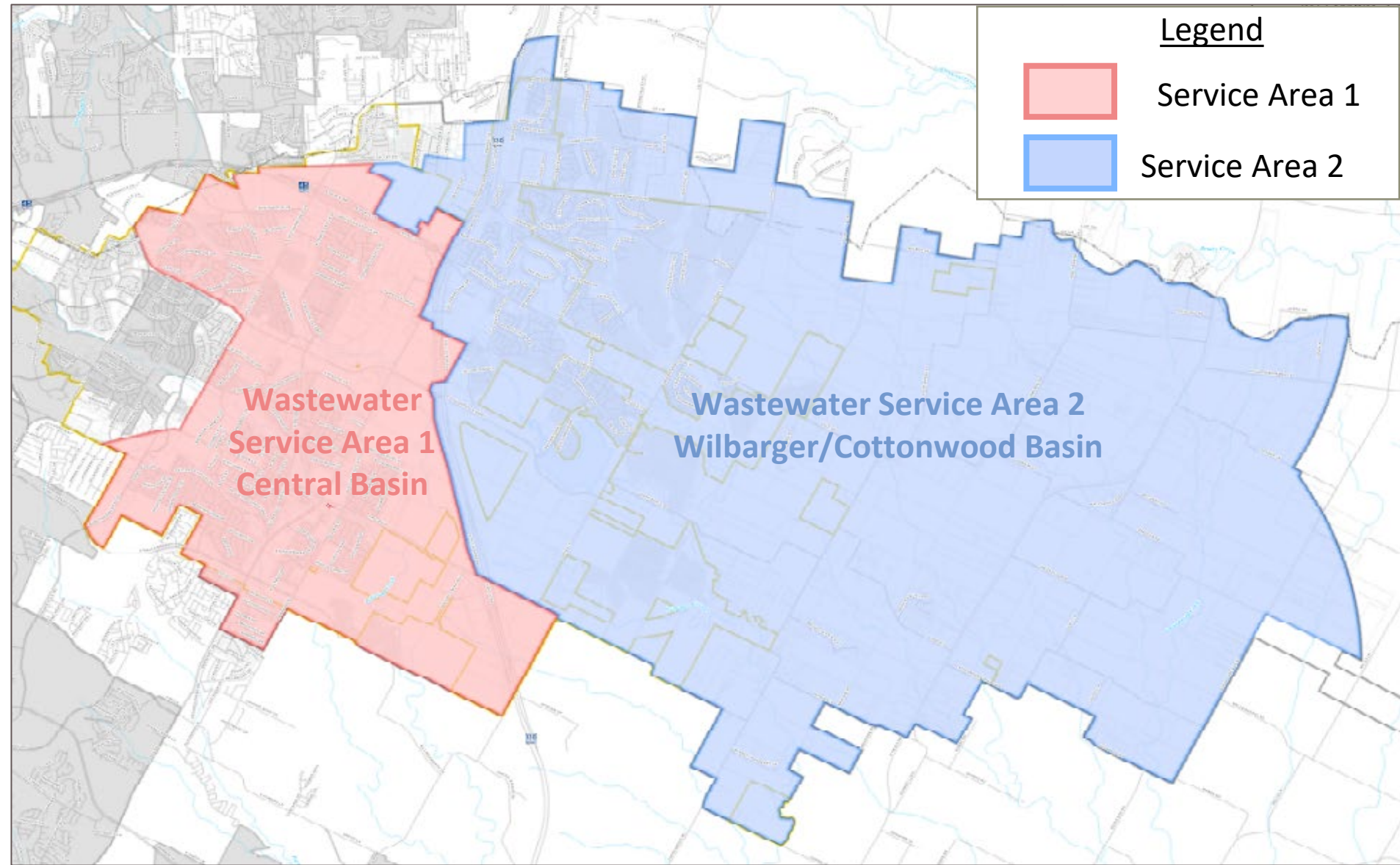
# Program Development Process



Map of Williamson County, Texas, showing the proposed boundary for the Williamson County Precinct 45. The precinct area is highlighted in green and outlined in yellow. The map includes major roads, water bodies, and surrounding precincts. The precinct number 45 is displayed in a blue box at the top center.



# Wastewater Service Areas





# Future Land Use

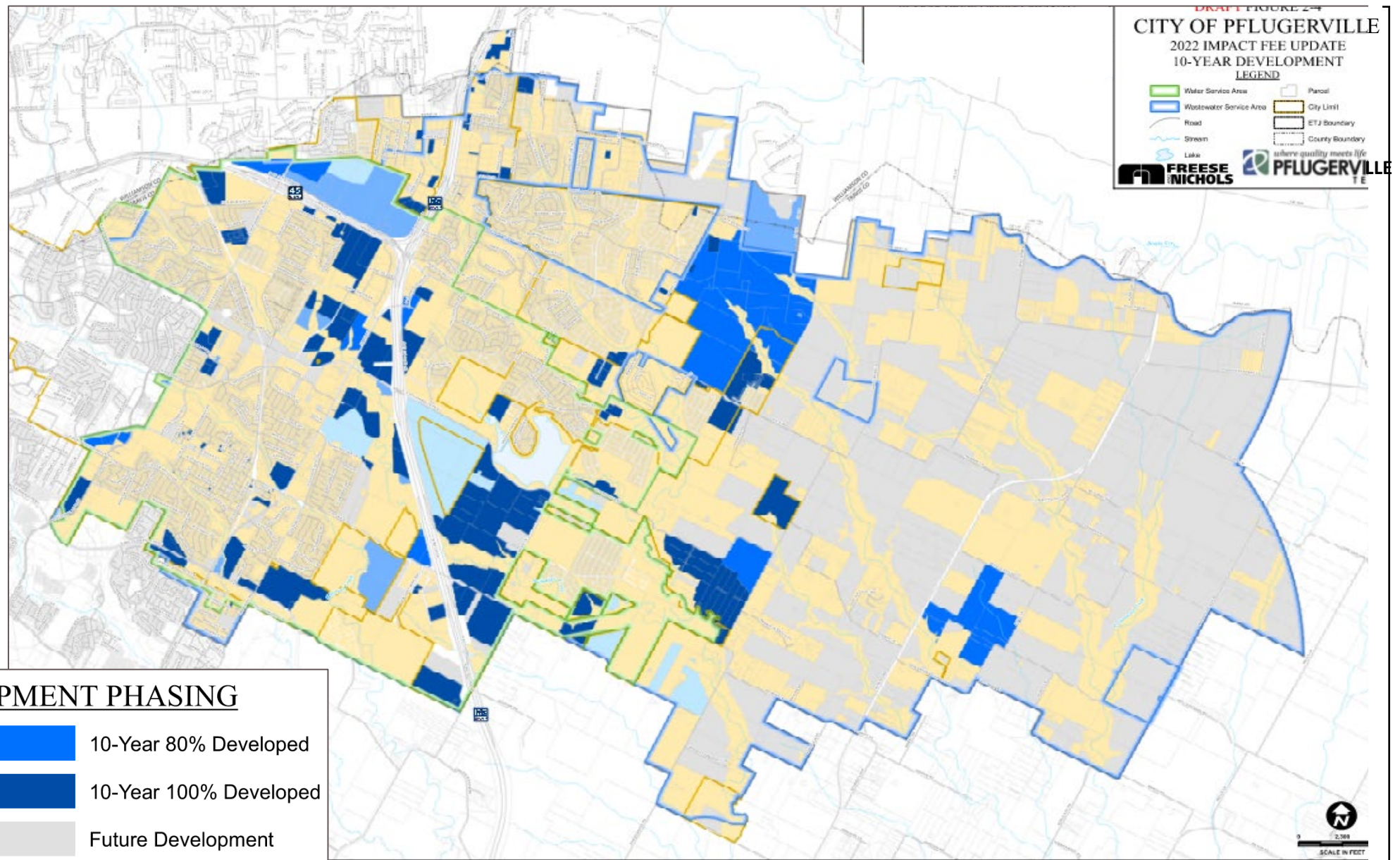


*Where quality meets life /*





# 10-Year Growth Areas





**Other Projects**

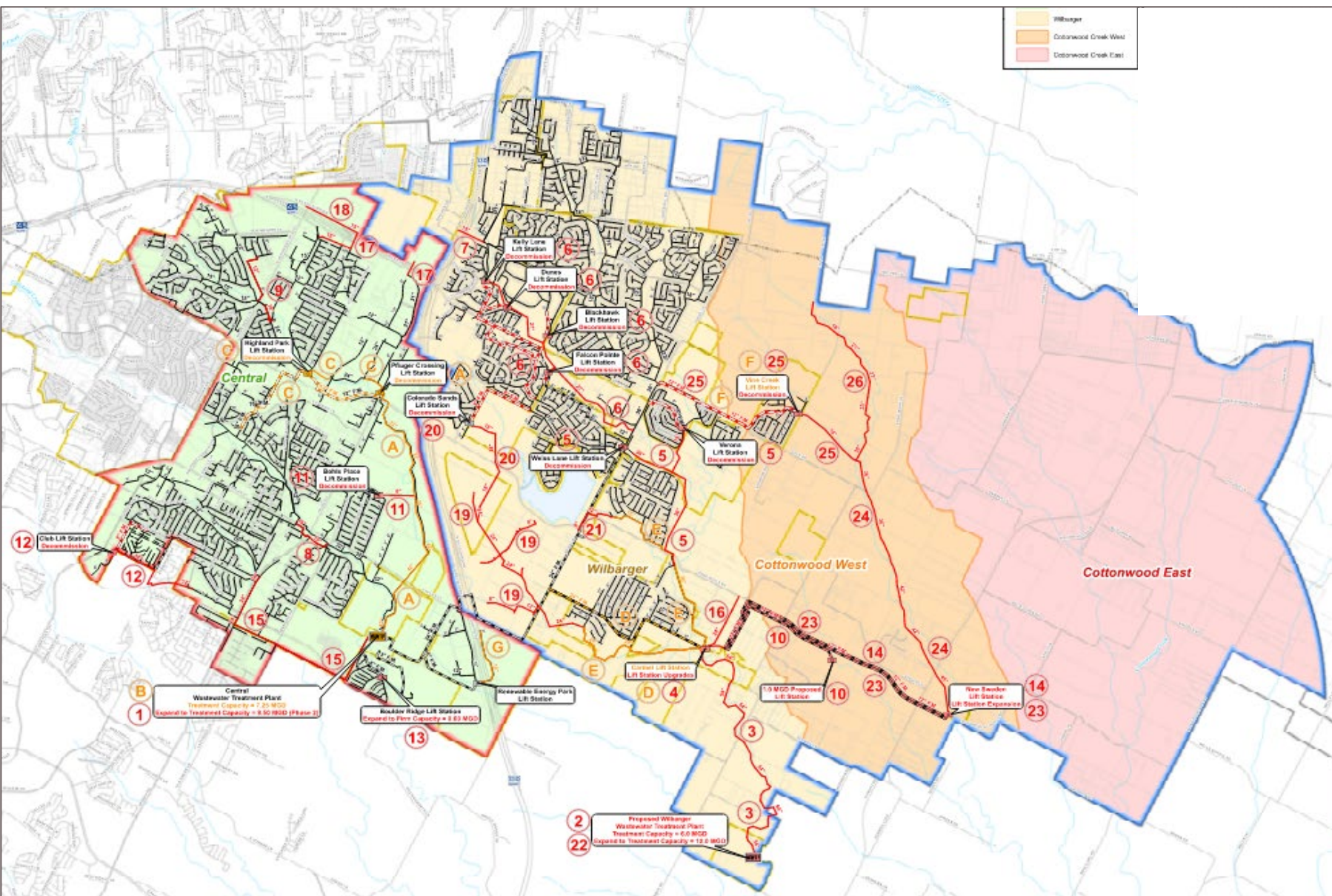
- 8 Colorado River Raw Water Line**
- 8 River Pump Station (Not Shown)**  
Rated Capacity = 7,500 gpm  
Expand Firm Capacity to 15,000 gpm

**8** Colorado River Raw Water Line

**8** River Pump Station (Not Shown)  
Rated Capacity = 7,500 gpm  
**Expand Firm Capacity to 15,000 gpm**



# Wastewater Impact Fee Capital Projects



Where quality meets life /





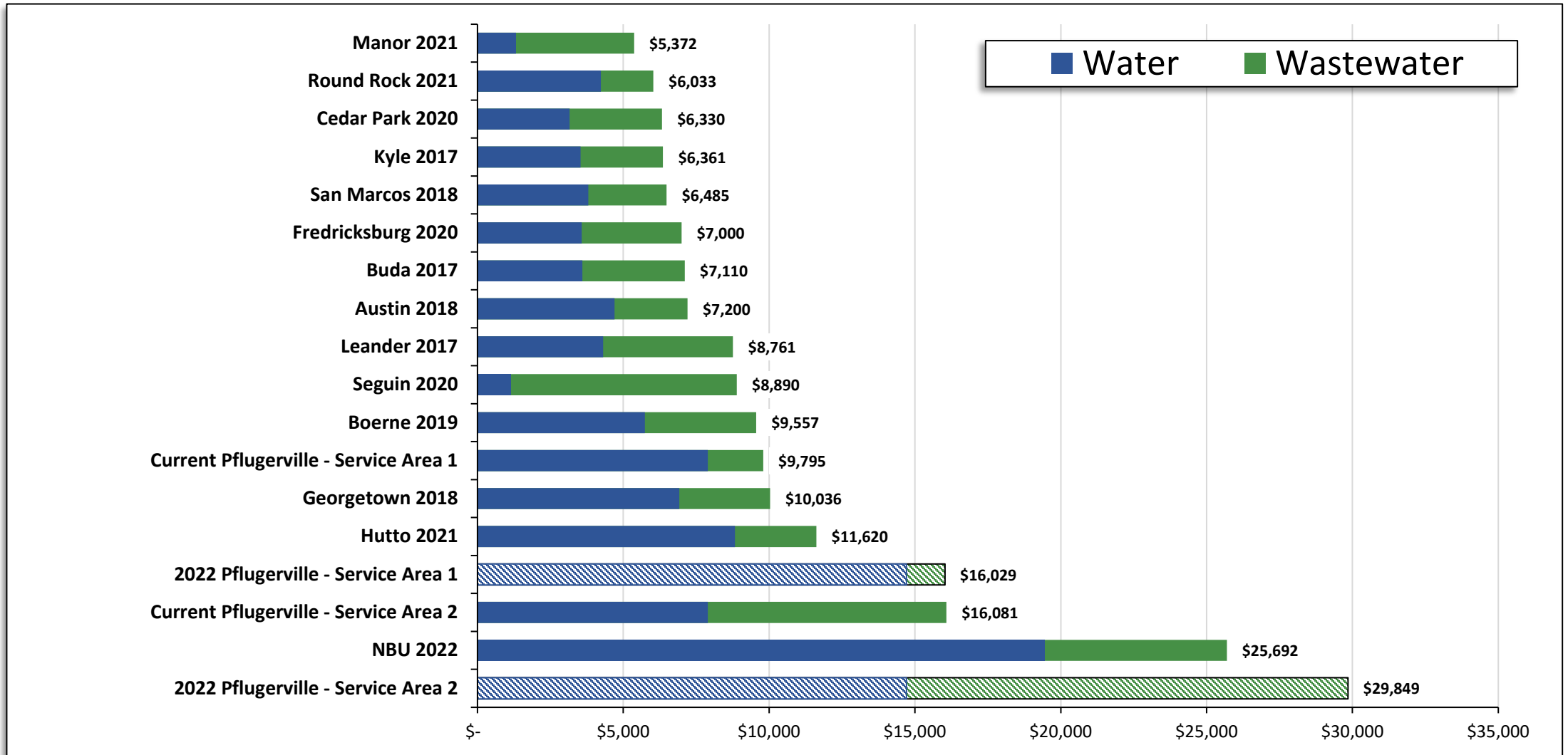
Meter Size	Safe Maximum Operating Capacity <sup>(1)</sup> (gpm)	Service Unit Equivalent
5/8" Displacement	15	1.0
3/4" Displacement	25	1.7
1" Displacement	40	2.7
1 1/2" Displacement	50	3.3
2" Displacement	100	6.7
3" Compound	320	21.3
4" Compound	500	33.3
4" Combination	700	46.7
6" Compound	1,000	66.7
6" Combination	1,600	106.7
8" Combination	2,800	186.7
10" Combination	4,400	293.3

(1) Safe maximum operating capacity is based on AWWA standards C700 and C710, C702, and C703.

## Service Unit Equivalencies (SUE)



# Comparison Cities



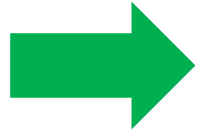


# Maximum Allowable Impact Fee

	Water	Wastewater Service Area 1	Wastewater Service Area 2
Total Eligible Capital Improvement Costs	\$614,292,366	\$114,148,959	\$612,071,764
Recoverable Costs for Impact Fee Planning Period	\$433,934,216	\$24,516,594	\$297,212,141
Financing Costs	\$348,304,315	\$17,503,197	\$230,381,291
Interest Earnings	(\$154,901,578)	(\$7,915,881)	(\$104,166,476)
Credit for Utility Revenue	(\$257,587,007)	(\$12,469,381)	(\$164,214,829)
Total Eligible Impact Fee Costs	\$369,749,946	\$21,634,529	\$259,212,127
Growth in Service Units	25,130	16,433	17,125
Maximum Impact Fee per Service Unit	\$14,713	\$1,316	\$15,136



# Schedule



November 7	<b>CIAC Meeting</b>
November 8	<b>Resolution</b> by City Council establishing Public Hearing date to consider possible adoption of impact fee (PH within 60 days of resolution).
November 11	<b>Publish Notice of Public Hearing</b> on impact fee (at least 30 days before PH; Report made available to public)
December 2	Impact fee written recommendation to City Council by CIAC
December 5	CIAC recommendation due to City Secretary/Council (at least 5 business days prior to PH)
December 13	<b>Public Hearing</b> on Impact Fee; <b>Ordinance</b> approving impact fee ( <i>adoption within 30 days of PH</i> )
January 10	2 <sup>nd</sup> Reading Ordinance approving Impact Fee



# Questions and Discussion

