



# Mansions at Stone Hill

“Live, Work, Play”

**Classification:** Community

**Size:** 9.3 acres



## Existing Park

Mansions at Stone Hill holds great potential as a multi-purpose community asset. The site consists of a flat, wide open grass field sandwiched between a large detention area, single family residential homes, a shopping/retail center, a proposed data center and new apartments. The demographics, as well the location of the site, call for urban-style design intervention.

## Park Programming

With the established neighborhood, the proposed employment center, the new apartments and a shopping retail center nearby. Mansions at Stone Hill Park will be the place for people to:

**LIVE**- get outdoors, exercise, family picnic, fly kites, learn, yoga, bring the dog, watch a movie

**WORK**- lunch breaks, areas to "get away" and relax, wireless internet access

**PLAY**- open fields for sports practice, destination dog park/trail, playscape, trails, yard games

## Thoughts & Feedback from the Public

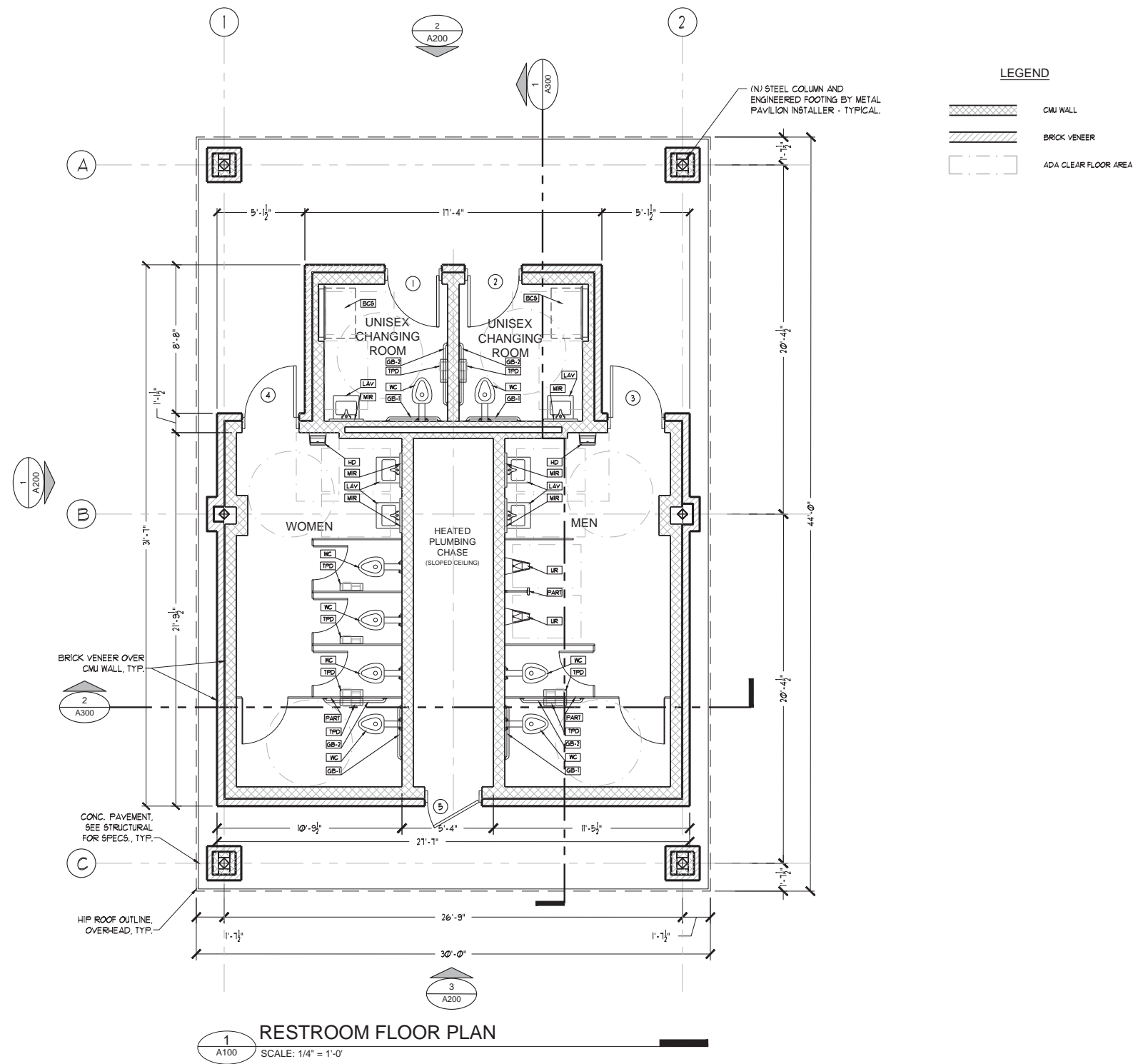
"Emphasis on 'walkability' (can't get to Stone Hill without a car)"

"There are a large number of people who live in Highland Park North as well as the occupants of the Mansions at Stone Hill Apartments who are underserved by Pflugerville's park and trails system, and I think the development of this parkland, even if it's a small park, will help many Pflugerville residents, many with young children like myself."

"I also personally think that the style of the Mansions park could be similar to the Mirror Lake park. I am a photographer and enjoy doing photo shoots at Mirror Lake because the fountain is beautiful and the stone area next to fountain looks nice and is a great place for people to sit and pose. I think the Mansions at Stone Hill Park would look nice with similar stone features... maybe a play mound with stone benches around it, or a small duck pond with a stone path circling it. White stone would be fitting for the name of the park."

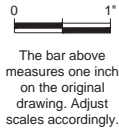
"It would be nice to have some trails out in the Stone Hill Center. I live in the Mansions at Stone Hill and there are many of us with dogs who would use trails out there every day. I would also use the trails to get to the stores nearby without having to drive around."





305 East Huntland Drive  
Suite 200  
Austin, Texas 78752  
p: 512.453.0767  
f: 512.453.1734  
  
TBAE FIRM REGISTRATION NO.: 1452  
TBPE FIRM REGISTRATION NO.: F-1416  
TBPLS FIRM REGISTRATION NO.: 10065600

NO.	DATE	DESCRIPTION	BY

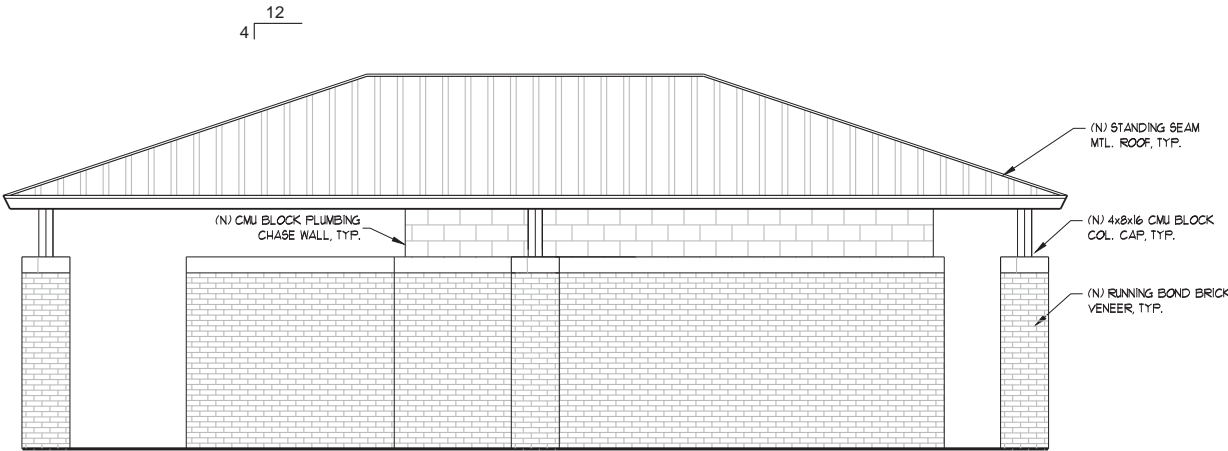


FLOOR PLAN

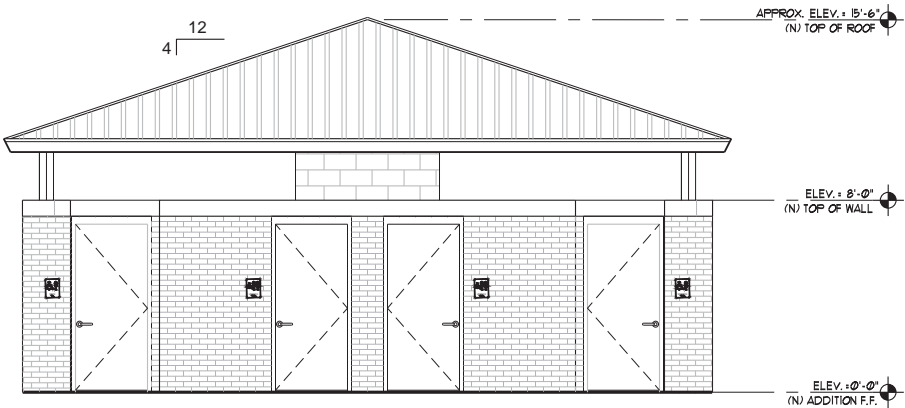
PFLUGER PARK RESTROOM REPLACEMENT  
CITY PARK ROAD  
PFLUGERVILLE, TEXAS 78660

PLOTTED: 11/8/2016  
JOB NO: 375-05

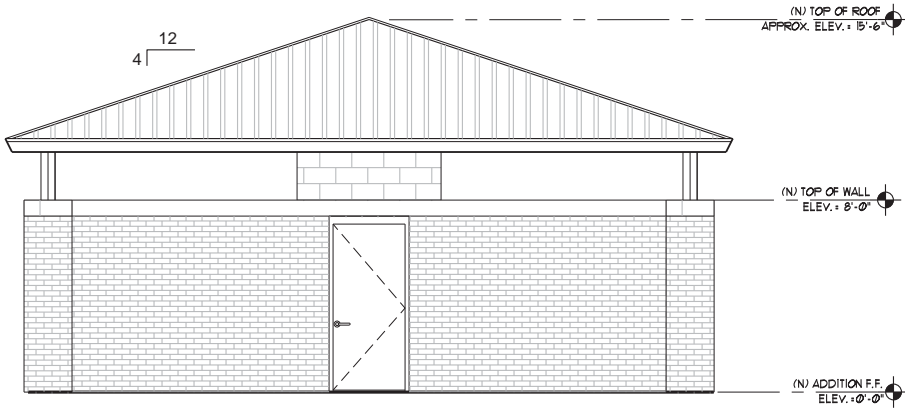
A100



**1 ELEVATION**  
A200 SCALE: 1/4" = 1'-0"



**2 ELEVATION**  
A200 SCALE: 1/4" = 1'-0"



**3 ELEVATION**  
A200 SCALE: 1/4" = 1'-0"



305 East Huntland Drive  
Suite 200  
Austin, Texas 78752  
p: 512.453.0767  
f: 512.453.1734

TBAE FIRM REGISTRATION NO.: 1452  
TBPE FIRM REGISTRATION NO.: F-1416  
TBPLS FIRM REGISTRATION NO.: 10065600

NO.	DATE	DESCRIPTION	BY

0 1"  
The bar above measures one inch on the original drawing. Adjust scales accordingly.

**EXTERIOR ELEVATIONS**

PFLUGER PARK RESTROOM REPLACEMENT  
CITY PARK ROAD  
PFLUGERVILLE, TEXAS 78660

PLOTTED: 11/8/2016  
JOB NO: 375-05

**A200**