

CITY OF PFLUGERVILLE, TEXAS

RESOLUTION NO. _____

A RESOLUTION OF THE CITY OF PFLUGERVILLE, TEXAS ACCEPTING THE TRANSFER OF A 9.8470-ACRE TRACT OF LAND FROM THE PFLUGERVILLE COMMUNITY DEVELOPMENT CORPORATION (PCDC) TO EXTEND THE CITY'S PARKS AND TRAIL SYSTEM.

WHEREAS, the City of Pflugerville, Texas (the "City") maintains a Trails Master Plan and Parks Development Plan; and

WHEREAS, the City of Pflugerville seeks to extend trails and promote connectivity of its park and trail system; and

WHEREAS, a 10-foot trail will be extended through this parcel improving connectivity and access the Pflugerville trail system using developer resources in conjunction with expansion of the Sorento Subdivision; and

WHEREAS, the Pflugerville Community Development Corporation (PCDC) Board authorized the transfer of the property on August 21, 2019; and

NOW, THEREFORE, BE IT RESOLVED BY THE CITY COUNCIL OF THE CITY OF PFLUGERVILLE:

That the transfer of land, being a 9.874-acre tract of land, is accepted for the extension of parks and trails as described and depicted in Exhibit A, with Warranty Deed in substantially the same form as Exhibit B and authorize the City Manager to execute documents necessary to affect the transfer.

PASSED AND APPROVED on this the 8th day of October 2019.

Victor Gonzales, Mayor

ATTEST:

Karen Thompson, City Secretary

EXHIBIT A

Description

Being the remaining portion of a 63.72 acre tract of land situated in the John C. Bray Survey No. 10, Abstract No. 73, Travis County, Texas described in that Warranty Deed recorded in Document No. 2004180178, Official Public Records, Travis County, Texas; **LESS, SAVE AND EXCEPT** that portion of said property conveyed to 130 Cactus Investments, Ltd. as part of a 119.023 acre tract in the Warranty Deed recorded in Document No. 2007229735, Official Public Records, Travis County, Texas.

Property Address: Jesse Bohls Road, Pflugerville, TX 78660

PROPERTY TRANSFER FROM PCDC TO CITY OF PFLUGERVILLE

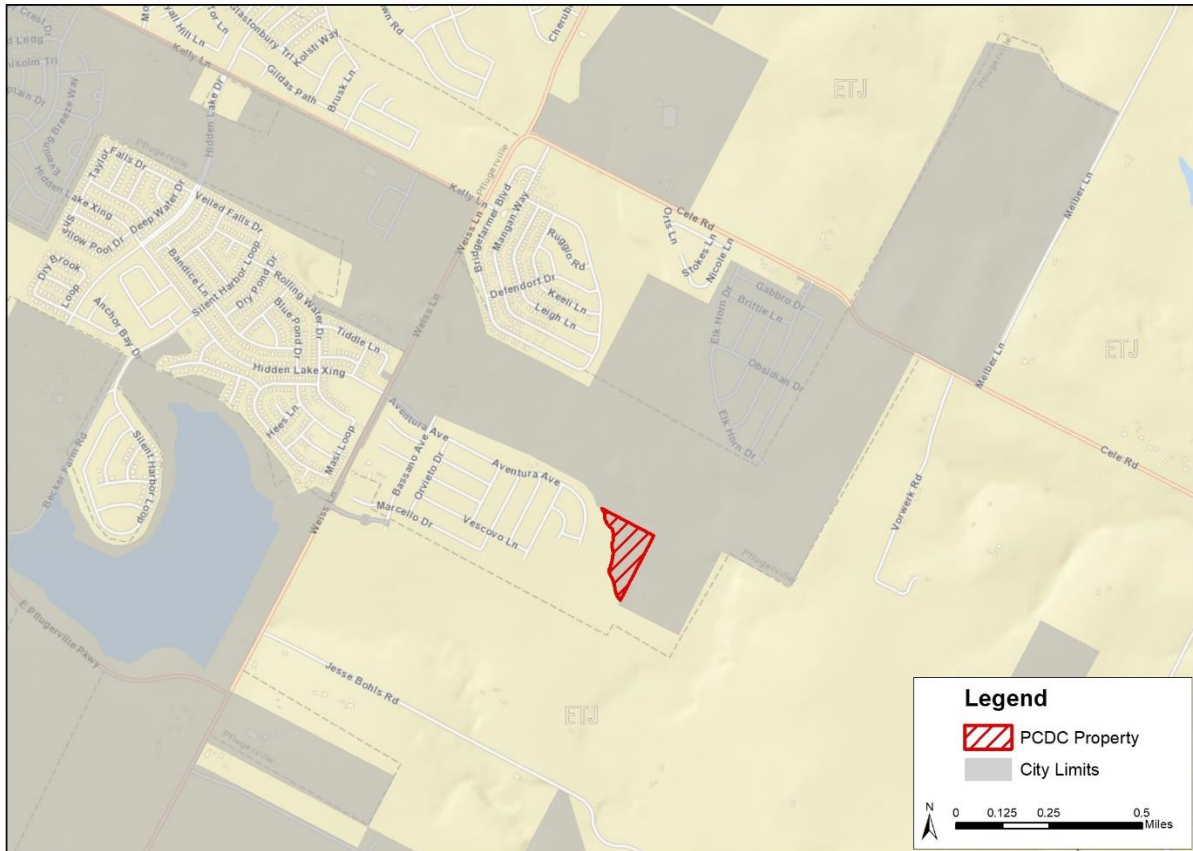


EXHIBIT B
WARRANTY DEED