

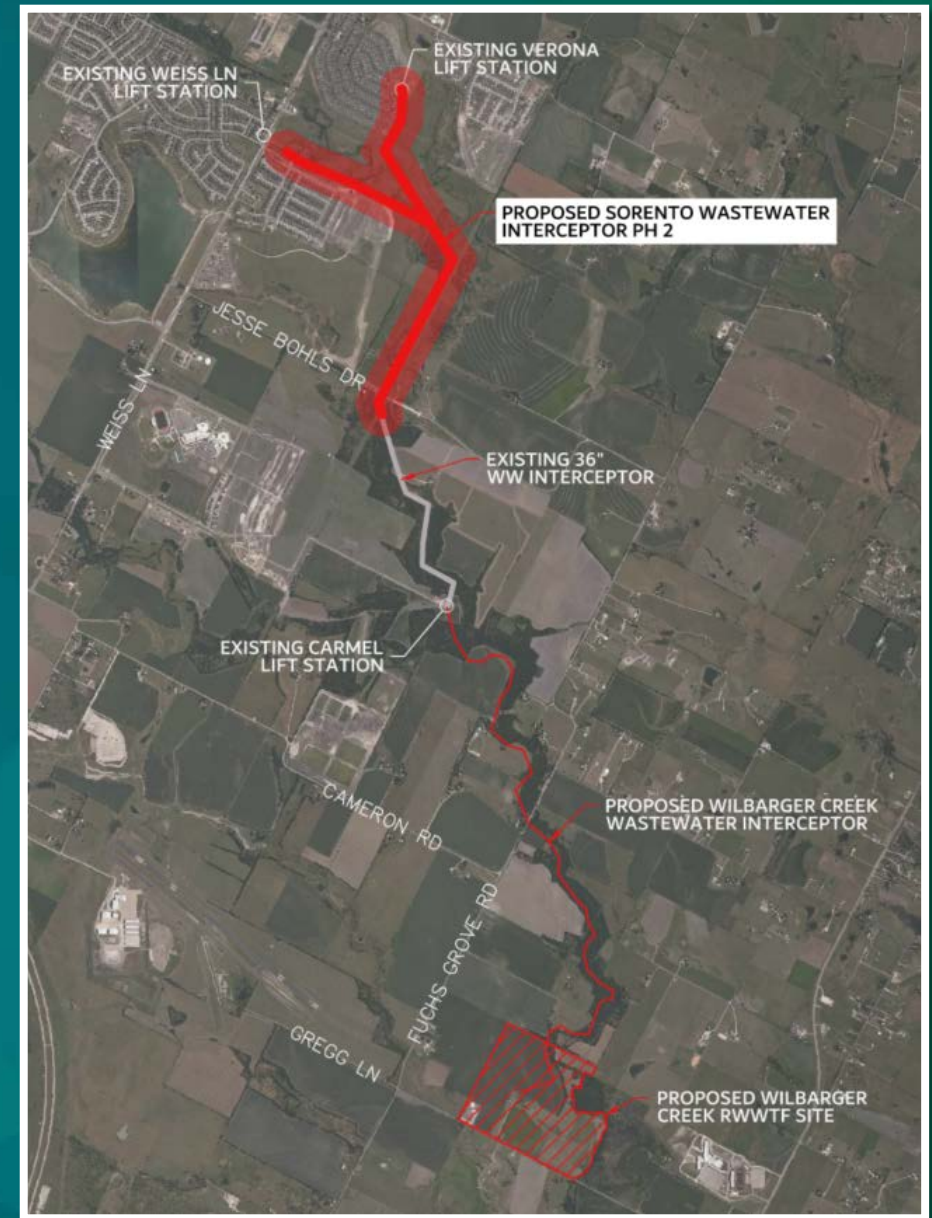
2020-8745

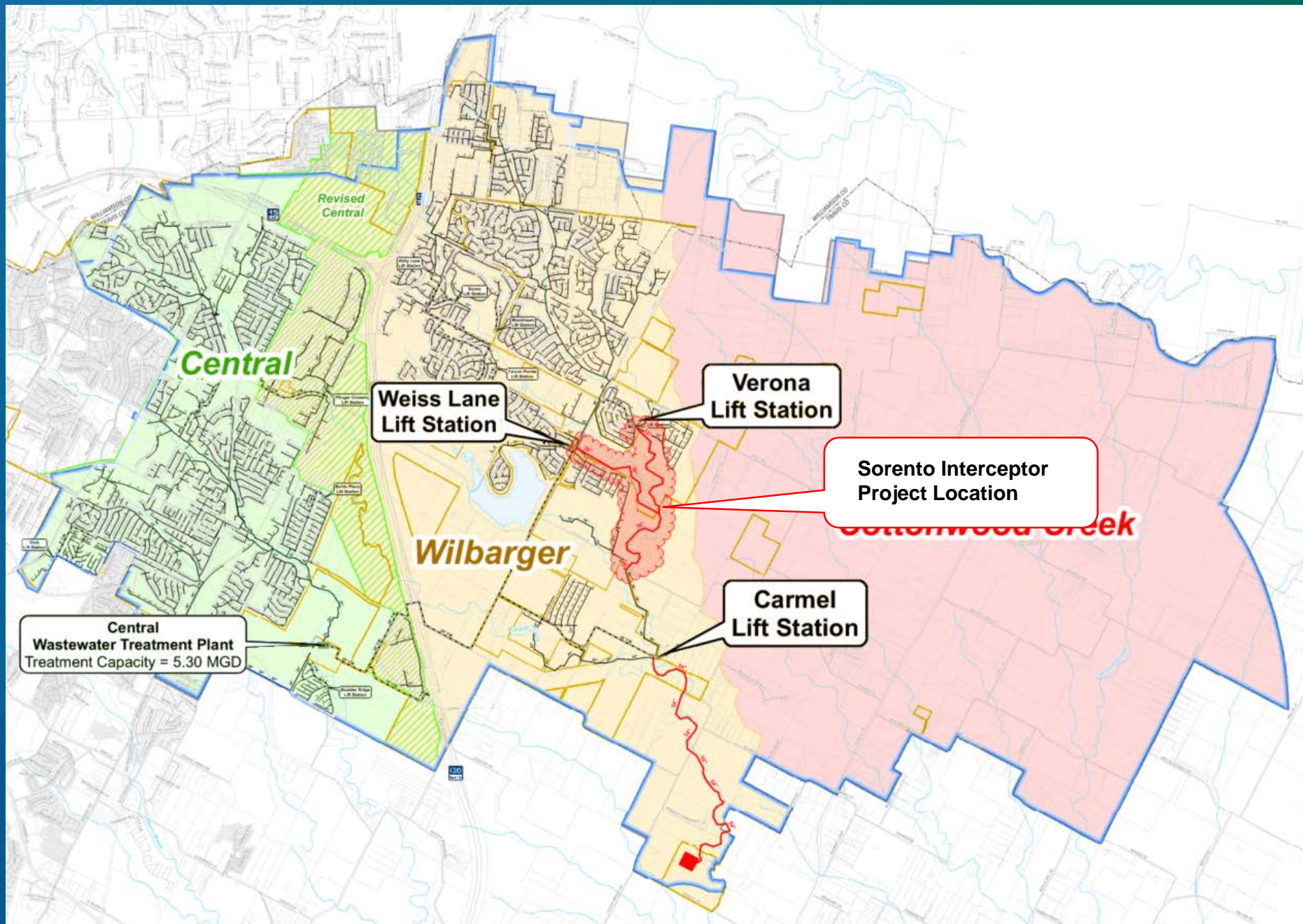
Approving a professional services agreement with CP&Y, Inc. in the amount of \$754,498.00 for professional engineering services associated with the Sorento Wastewater Interceptor Phase 2 project



Project Overview

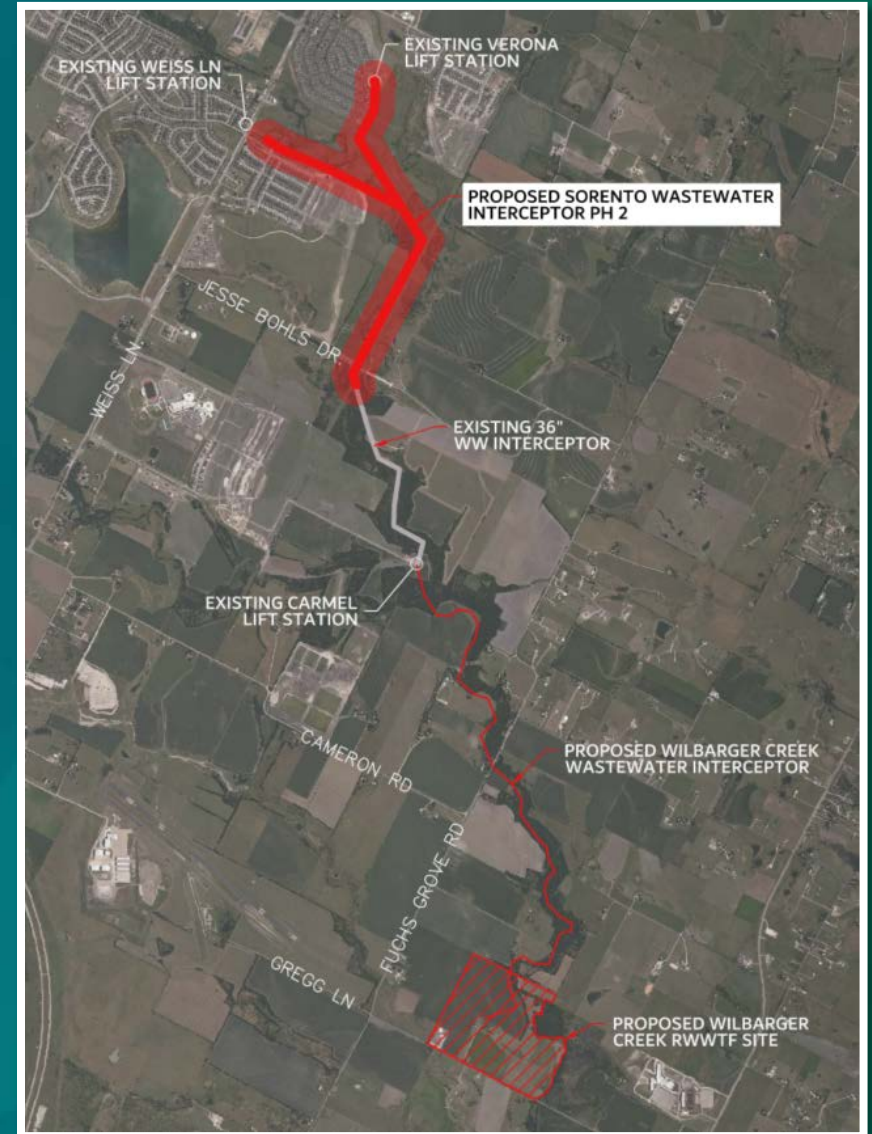
- Approximately 12,200 LF of 15" & 36" wastewater line along Upper Wilbarger Creek
- **Project 6** in the Wastewater Master Plan
- Provide relief to the Weiss Lane LS that is nearing capacity
- Flow diversion at the Weiss Lane Lift Station
- Decommissioning of the Verona Lift Station
- Downstream connection to the existing Sorento Wastewater Interceptor Ph. 1
- Project will convey flows to the Carmel Lift Station and proposed Wilbarger Creek WWTF





Scope of Services

- Project Management
- Preliminary Engineering
- Design Phase Services
- Permitting
- Bid Phase Services
- Construction Phase Services
- Geotechnical Investigation
- Environmental Evaluation
- Survey
- Subsurface Utility Engineering (SUE)



Staff Recommendation

Staff recommends approving a professional services agreement with CP&Y, Inc. in the amount of \$754,498.00 for professional engineering services associated with the Sorento Wastewater Interceptor Phase 2 project

